

TAKE OUT MENU Lonsdale

STARTER

- MISO SOUP 2.75
- RICE 3
- EDAMAME 6
- TAKO WASABI 6.5



Marinated raw octopus in wasabi sauce.

MUST TRY

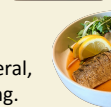
- GOMA AVO** 8
Avocado with sesame peanut sauce.
- TOMATO KIMCHI** 6
Sweet and spicy tomato salad.



- ABURI HAMACHI CARPPACCIO** 15
Lightly seared yellow tail, greens, basil dressing.



- BEEF TATAKI** 16
Lightly seared tenderloin, yuzu ponzu & garlic sauce.



- SIME SABA YAKI** 14
Lightly seared cured mackerel, greens, yuzu ponzu dressing.



DONBURI

- UNAGI DON** 21
BBQ "eel", soy glaze unagi sauce, greens.



- CHA SHU DON** 18
Melt-in-mouth braised pork belly, miso & mustard sauce, greens.



SASHIMI DONBURI

Raw fish on rice greens on seasoned sushi rice.

- Tuna 20
- Atlantic salmon 21
- Hamachi 25
- Sockeye salmon 23



SASHIMI Raw fish



- Hamachi 5pc 18 9pc 24
- Toro 5pc 17 9pc 23
- Wild salmon 5pc 16 9pc 22
- Salmon 5pc 14 9pc 20
- Tuna 5pc 13 9pc 19
- Tuna & Salmon 5pc 14 9pc 20

NIGIRI

Raw fish on sushi rice

- Unagi BBQ eel 5.5
- Yellow tail 5.5
- Tuna belly 5.5
- Sockeye salmon 4.5
- Atlantic salmon 3.75
- Albacore tuna 3.5
- Inari 2.75
- Tamago 3.25
- Ebi Prawn 3.5
- Tobiko 3.5

UDON

- CHASHU UDON** 18

Udon noodle soup with chashu pork.



- KAKE UDON** 12

Udon noodle soup in light umami dashi broth.



What we are famous for.

"GREEN LEAF SIGNATURE"

6 kinds of signature Aburi oshi.

- ABURI PLATTER** ~~82~~ → 69

Atlantic salmon oshi 6pc, ebi oshi 6pc, saba oshi 6pc, yukke tuna oshi 6pc, hotate oshi 6pc, tobiko roll 8pc.



NEW

- LOLO PLATTER** ~~90~~ → 78

Sockeye salmon oshi 6pc, kani oshi 6pc, tofu oshi 6pc, truffle avocado oshi 6pc, spicy tuna oshi 6pc, tobiko roll 8pc.



Fresh & Aburi OSHI

- SALMON OSHI** 13
Double layered atlantic salmon, oshi sauce, serrano.
- SOCKEYE SALMON OSHI** 14
Double layered wild salmon, oshi sauce, serrano.
- YUKKE TUNA OSHI** 13
Soy marinated tuna, sweet onion, alfalfa.
- HOTATE OSHI** 14
Scallop, tobiko, oshi sauce.
- EBI OSHI** 14
Tiger prawn, basil pesto sauce, olive, parmesan cheese.
- SABA OSHI** 13
Seasoned mackerel, miso sauce, green onion.
- ABURI TOBIKO ROLL** 15
Salmon, cucumber, crab meat, tobiko, oshi sauce, serrano

NEW

- TRUFFLE AVOCADO OSHI** 15
Fresh avocado, oshi sauce, truffle, himalayan salt.
- SPICY TUNA OSHI** 15
Gochujang marinated tuna, spicy oshi sauce, serrano.



- YUZU CHASHU OSHI** 16
Chashu pork, green onion, yuzu-kosho oshi sauce.

- UNAGI OSHI** 18
BBQ eel, sweet spicy miso, garlic chip, green onion.

- KANI OSHI** 18
Real crab, tiger prawn, ume oshi sauce, crispy caper.



- NEGI TORO OSHI** 14
Chopped tuna belly, green onion.

- TOFU OSHI** 13
Seasoned tofu, soy paper, sweet onion, alfalfa.

- Mild spicy
- Vegetarian
- Gluten free option
- Spicy
- Spicy-wasabi
- Peanut

Prices and menu items are subject to change without prior notice waiting. Please advise your Server of any food allergies before ordering.

SALAD

WAKAME SALAD 6

Seaweed with yuzu ponzu dressing.

GOMA AE 7

Spinach with sesame peanut sauce.



GARDEN SALAD 12

Green leaf signature house dressing.

TOFU SALAD 15

Yuzu ponzu & sesame dressing.



AVOCADO SALAD 16

Wasabi mayo & wasabi soy dressing.

JELLY FISH SALAD 18

Yuzu ponzu & sesame dressing.

ROLL Seaweed inside

SALMON & AVO 8

TUNA & AVO 8

Sockeye salmon +0.5

AVOCADO 7.5



BEVERAGE

San pellegrino 3.5

Aranciata, melograno, limonata.



Pops 3

Coke, diet coke.



Sparkling 4

water

Perrier Original.



Juice 4

Orange, apple.



Ichiban value COMBO

VEGE:TABLE SETTO 25



Lolo salad, truffle avocado 6pc, inari 2pc

KARAI SETTO 26

Spicy tuna oshi 6pc, salmon oshi 6pc, tomato kimchi.



SASHIMI & SUSHI 26



Appetizer sashimi 5pc, nigiri sushi 4pc.

GREEN LEAF-ER 28

Appetizer sashimi 5pc, lolo salad, tamago roll 6pc, daily oshi 6pc.



TATAKI SALAD

Flame seared, yuzu ponzu dressing.

Tuna 19 Salmon 20
Wild salmon +1



SEAFOOD SALAD

Fresh sashimi, greens, house dressing.

Regular 21

Spicy 22



MAKI Seaweed outside

KANI Real crab 12

HOUSE 15

Salmon, tuna, kani, scallop, tobiko, tamago, cucumber.



SALMON 7

7

TAMAGO 6

6

Sockeye salmon +0.5

CUCUMBER 5.5

5.5

TUNA 6.5

6.5

INARI 6.5

6.5

PARTY TRAY

VEGE TRAY 45

(Maki & roll 18pcs, oshi 12pcs)



- Truffle avocado oshi 6pcs
- Tofu oshi 6pcs
- Kappa maki 6pcs
- Inari maki 6pcs
- Avocado roll 6pcs

TRAY A 46

(Maki 18pcs, oshi 12pcs)



- Kappa maki 6pcs
- Sockeye salmon maki 6pcs
- Tuna maki 6pcs
- Sockeye salmon oshi 6pcs
- Spicy tuna oshi 6pcs

TRAY B 52

(Maki 12pcs, oshi 18pcs)



- Tamago maki 6pcs
- Inari maki 6pcs
- Sockeye salmon oshi 6pcs
- Ebi oshi 6pcs
- Hotate oshi 6pcs

TRAY C 72

(Maki 12pcs, nigiri 9pcs, oshi 6pcs)



- Sockeye salmon nigiri 3pcs
- Tuna nigiri 3pcs
- Ebi nigiri 3pcs
- Kani maki 6pcs
- House roll 6pcs
- Sockeye salmon oshi 6pcs